

# 2016 Rockhampton

LADY GOWRIE QLD  
EARLY CHILDHOOD

ONE DAY  
CONFERENCE

**SATURDAY 20TH AUGUST**



## VENUE

**Empire Apartment Hotel, Rockhampton**



Lady Gowrie <sup>QLD</sup>  
Educating and caring  
for children since 1940

# CONFERENCE PROGRAM



## Michael Nagel PhD

### A User's Guide to the Brain: Understanding Neuroscience to Nurture Young Minds

Dr Michael Nagel is an Associate Professor in the School of Education at the University of the Sunshine Coast where he teaches and researches in the areas of cognition, behaviour and learning and human development and early learning.

He has written a number of books related to neurological development in children and has delivered over 200 workshops and seminars for parents and teachers nationally and internationally.

#### Abstract

What are the most important things you can do to foster healthy development in young minds? What does technology do to a young brain? What are the keys to developing emotional regulation in children? Scientists know! This presentation shares what the latest science has to say about how to work with young minds and equally important, what to avoid doing. The presentation also debunks a number of myths related to brain development and explores the merits behind products and programs suggesting that they can hyper-stimulate learning. The overall aim is to develop an understanding of how the brain works, what it focuses on in the early years and what are the key factors involved with nurturing a healthy mind.



## Vivienne Williams

### Sensory Processing in the Kindy

She graduated from the University of Queensland in 1997 and has worked in paediatrics since then. Besides managing the practice,

Vivienne works with children with a range of sensory processing challenges.

She is a passionate advocate of DIR /Floortime, using the approach with children who have Autism, ADD, ADHD, Aspergers, developmental delays and other organisational, planning and learning issues, including Dyslexia.

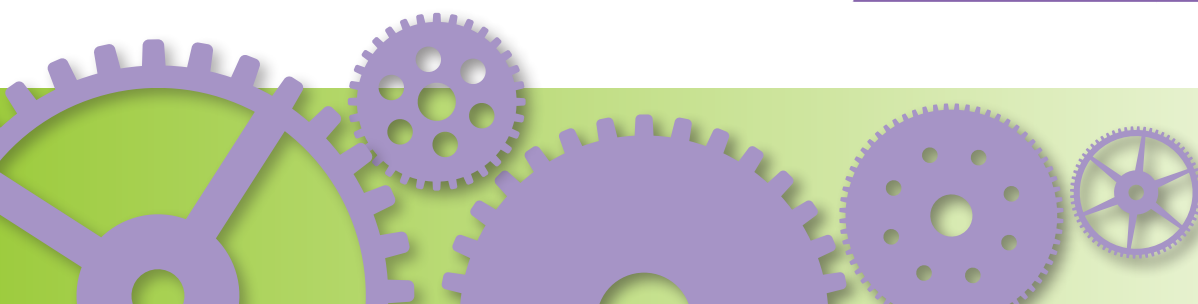
Vivienne also works with regulation and behavioural issues, and uses her SOS training to assist with feeding concerns. She has completed her DIR/Floortime 1 year certification. Vivienne is a frequent and popular speaker to teachers and parents, travelling to schools in metropolitan and regional areas to share her knowledge and experience in fun, informative and practical ways.

#### Abstract

Learn the fundamentals of sensory processing theory; and take away strategies to improve attention, calmness, co-operation and behaviour. This course gives a basic understanding of Sensory Processing Disorder for those teaching a kindy child with Sensory Processing issues. This brief keynote address gives you the basic theory of the senses and how these affect arousal and development. It helps you to identify the different kinds of sensory processing challenges and gives a few strategies to try in the kindy.

## SATURDAY 20TH AUGUST 2016

8:30am - 9.00am	Registration
9:00am - 10.00am	Michael Nagel Opening Address
10.00am - 10.30am	MORNING TEA
10.30am - 11.30am	Session One
11.30am - 12.30pm	Session Two
12.30pm - 1.00pm	LUNCH
1.00pm - 2.00pm	Session Three
2.00pm - 3.00pm	Vivienne Williams Closing Address



# Selection of Invited - SPEAKERS

## CONCURRENT SESSION ONE



**Presenters: Sue Lewin and Sharron Lindh**  
**Workshop Abstract: Sustainability: Connecting with the land through music and dance.**

'Beneath the concrete, beneath the street, beneath the houses and the places people meet.  
There is the soil, the clay, there is the sand,  
Beneath the cities and the towns, there is the land.'



This interactive music workshop will explore traditional and original songs and dances of the land and its creatures. As children spend more time indoors, they can be disconnected from the source of their food and necessities, and the cycle of natural life.

We will introduce:

- Ways to encourage and develop positive connections to the earth and a desire to look after the land in which we live.
- Understanding of the sources of our food.
- Ways to imbed indigenous perspectives into the early years curriculum
- All of these will be introduced through the medium of songs and dances.



**Presenters: Sue Southey**  
**Workshop Abstract: Playing with Technology (3-5 yrs)**

This workshop can also be adapted to "Playing with interactive white boards" or "Playing with iPads"

There is increasing pressure to see children engaging with technology in educational settings, however educators are often not clear about how the use of technology aligns with EYLF. This workshop provides educators with a framework for using technology to help them justify to themselves and families about the role of technology in good practice. Educators are introduced to a range of strategies using technology that support play based learning. Practical activities are included for services that currently use iPads or interactive white boards with children.

## CONCURRENT SESSION TWO



**Presenter: Leanne Hunter and Lisa Sonter**  
**Workshop Abstract: Whose problem is it anyway?**

Conflicts and challenging behaviours are a part of the day when working with young children. Challenges can occur with children, colleagues and/or families. How we deal with these conflicts often determines whether the result is a win/win or a win/lose situation. Our attitude to conflict is pivotal in determining successful strategies.

This session will explore intentional teaching strategies to bolster relationships and support respectful practices with children.

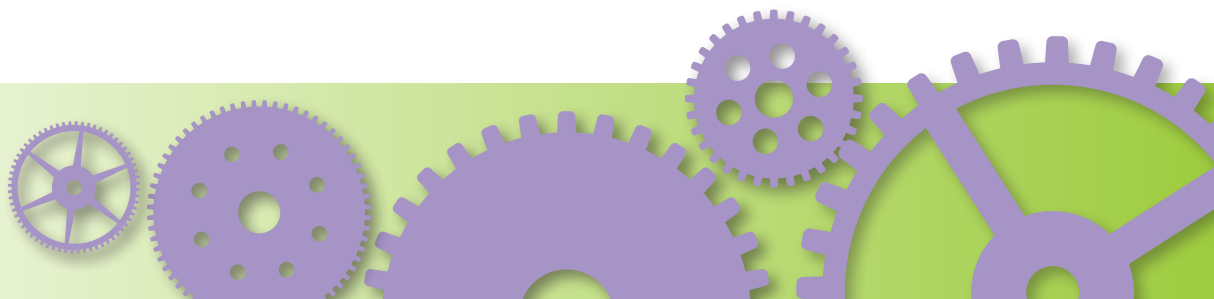


**Presenter: Jenny Finlay**  
**Workshop Abstract: Exploring Effective Leadership in Early Childhood**

"It is recognised that effective leadership is vital to the success of education and care settings. Without skilled and committed leaders to help shape teaching and learning, the opportunity to create and sustain high-quality learning environments is minimal. (Leithwood et al., 2006, p. 4; Mitgang, 2012, p. 3)."

This interactive session will explore ways that leadership can be enacted in Early Childhood settings with a particular focus on affiliated services. Questions to explore will include:

- Who are the leaders in early childhood settings?
- What are their roles?
- What does leadership in action look like?
- How can an early childhood leader engage with the local community to develop service capacity?
- What are the challenges of being a leader and how can we work through these challenges?
- How can I work with my committees?



# Selection of Invited - SPEAKERS

## CONCURRENT SESSION THREE



**Presenters: Sue Southey**  
**Workshop Abstract:**  
**Creating Scientists**

Educators connect to children as learners when they capitalise on children's natural curiosity to investigate and discover by using scientific ways of working. A scientific framing supports children to observe, make predictions and test their theories about the natural and physical aspects of our world. This workshop will demonstrate how educators can use a range of strategies in a play based curriculum to build children's scientific enquiry skills from babies to kindergarten aged children including:

- Gaining an understanding of scientific ways of working
- Differentiating strategies for a range of ages and abilities
- Developing an understanding of the role of a scientifically rich environment to stimulate children's interest in science
- Gaining skills in responding to children's questions to develop scientific ways of working.



**Presenter: Emerald Kindergarten**  
**Workshop Abstract:**  
**"Oh What a Feeling"**

"This is a hands on/in workshop"  
This workshop will give you 'practical ideas' for using your resources to create a magical invitation to play using "sensory ideas".



Julie & Kay share their experience in creating educational play environments.

In this session the team will share their unique learning environments that they have created in their Kindergarten centre. You can take away with you 'practical ideas & recipes'.

You will be given the opportunity to discuss your own unique centre & share ideas that work for you or the barriers you may have in your workplace.

Julie Kavanagh & Kay Harling are Early Childhood Teachers who work in a double unit Kindergarten in the Central Queensland town of Emerald. They both have over 35 yrs experience in Early Childhood Settings.



## REGISTRATION

To register for the Lady Gowrie Qld Conference go to <http://gowrieqld.arlo.co/> and complete the electronic Registration Form.

**Cost: \$125.00** (Incl GST)

**Registration Closes:** Friday 12th August

**Enquiries:** [events@ladygowrie.com.au](mailto:events@ladygowrie.com.au)

Phone: (07) 1300 945 405 or fax (07) 3252 2258

**qiec**  
**super**  
your educated choice

We acknowledge the support of QIEC Super and is the preferred Superannuation supplier of Lady Gowrie Qld.

